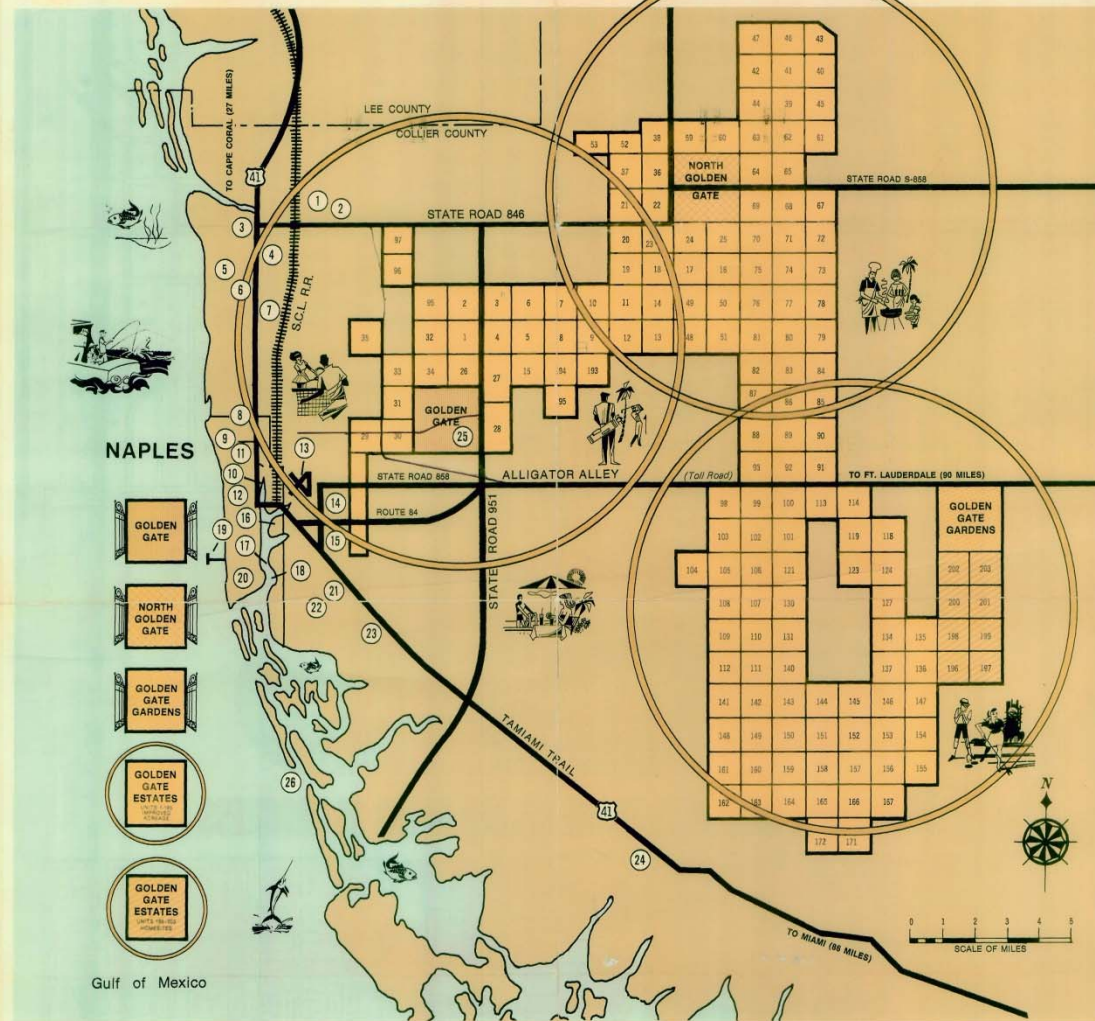


3 GATES TO PROGRESS IN THE GOLDEN RINGS



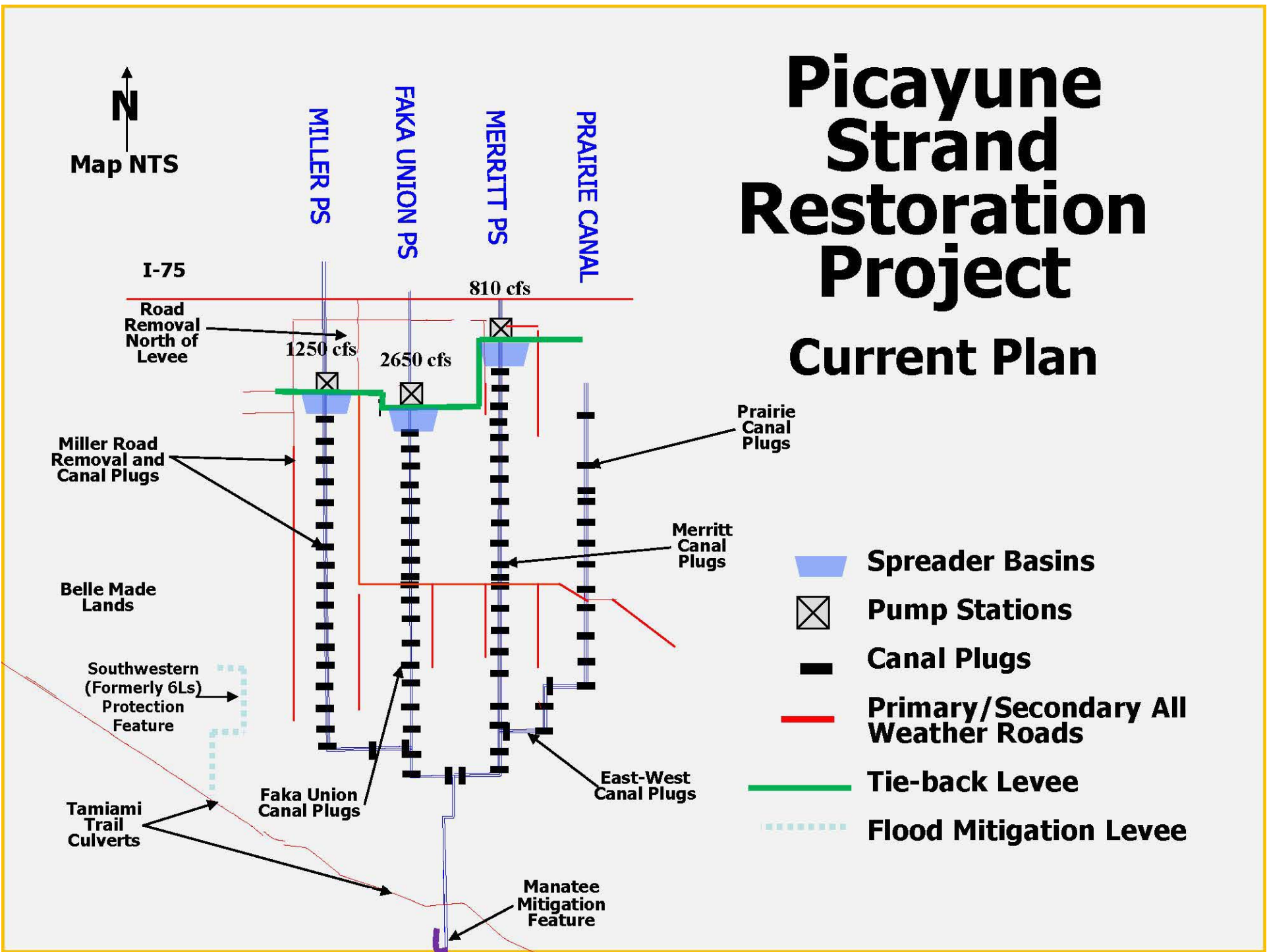
- POINTS OF INTEREST**
- | | | | |
|-------------------------------------|------------------------------|-----------------------|-------------------------------------|
| ① Palm River Country Club | ⑦ Hole in One Golf Club | ⑭ Naples Gardens | ⑲ South Tamiami Heights |
| ② Palm River Estates | ⑧ The Moorings | ⑮ New Court House | ⑳ Avalon Park |
| ③ Naples Park | ⑨ Big Cypress Museum | ⑯ Golden Shores | ㉑ Naples Manor |
| ④ Twin Lakes | ⑩ Gordon River Homes | ⑰ Naples Yacht Club | ㉒ Collier-Seminole Park |
| ⑤ Seagate | ⑪ Chamber of Commerce | ⑱ Royal Harbor | ㉓ Golden Gate Golf and Country Club |
| ⑥ Big Cypress Golf and Country Club | ⑫ Naples Golf and Beach Club | ⑳ Naples Fishing Pier | ㉔ 10,000 Islands |
| | ⑬ Naples Airport | ㉕ Port Royal | |

GOLDEN GATE - NORTH GOLDEN GATE - GOLDEN GATE ESTATES - GOLDEN GATE GARDENS



Picayune Strand Restoration Project

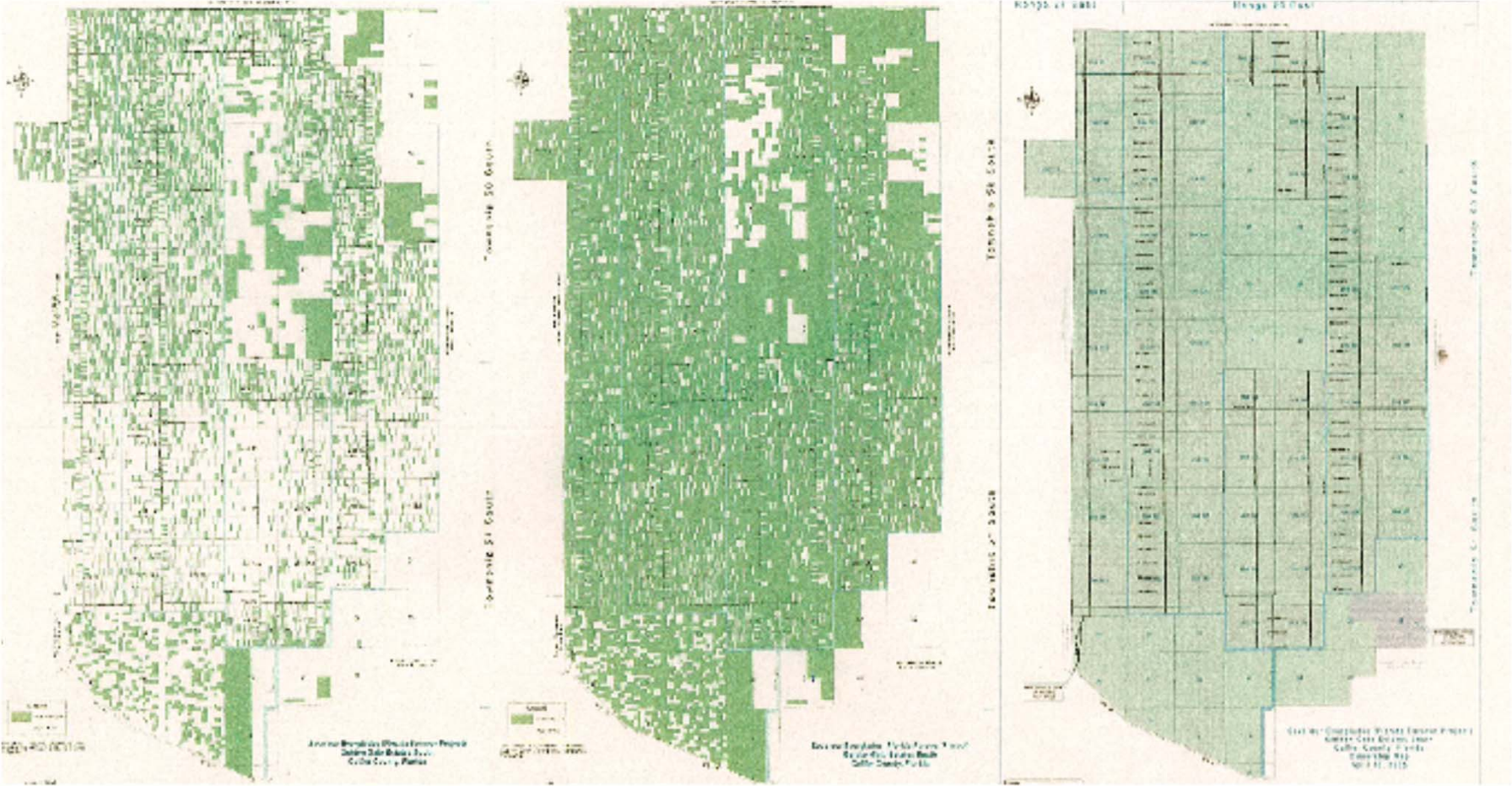
Current Plan





06/22/2012

Land Acquisition

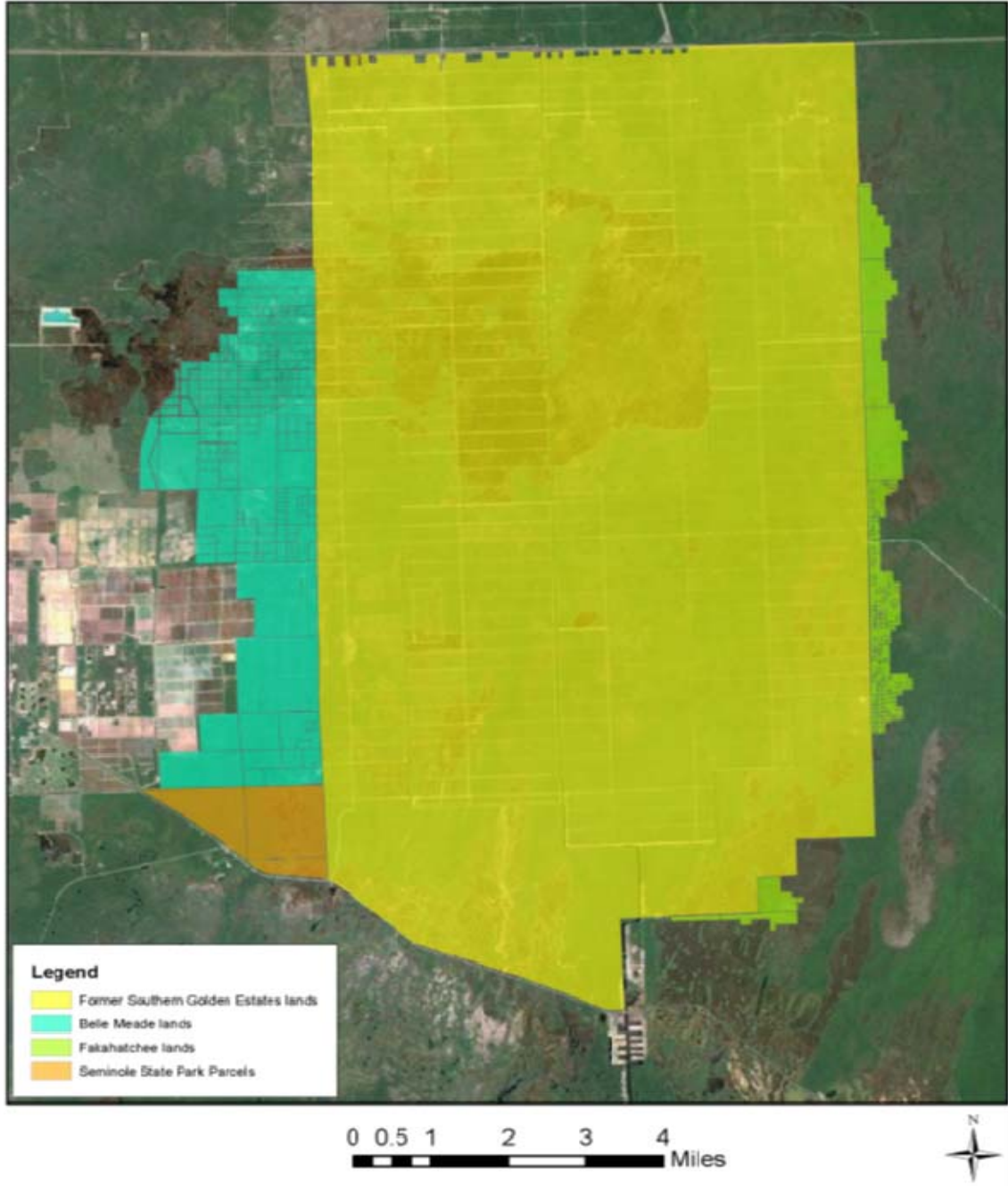


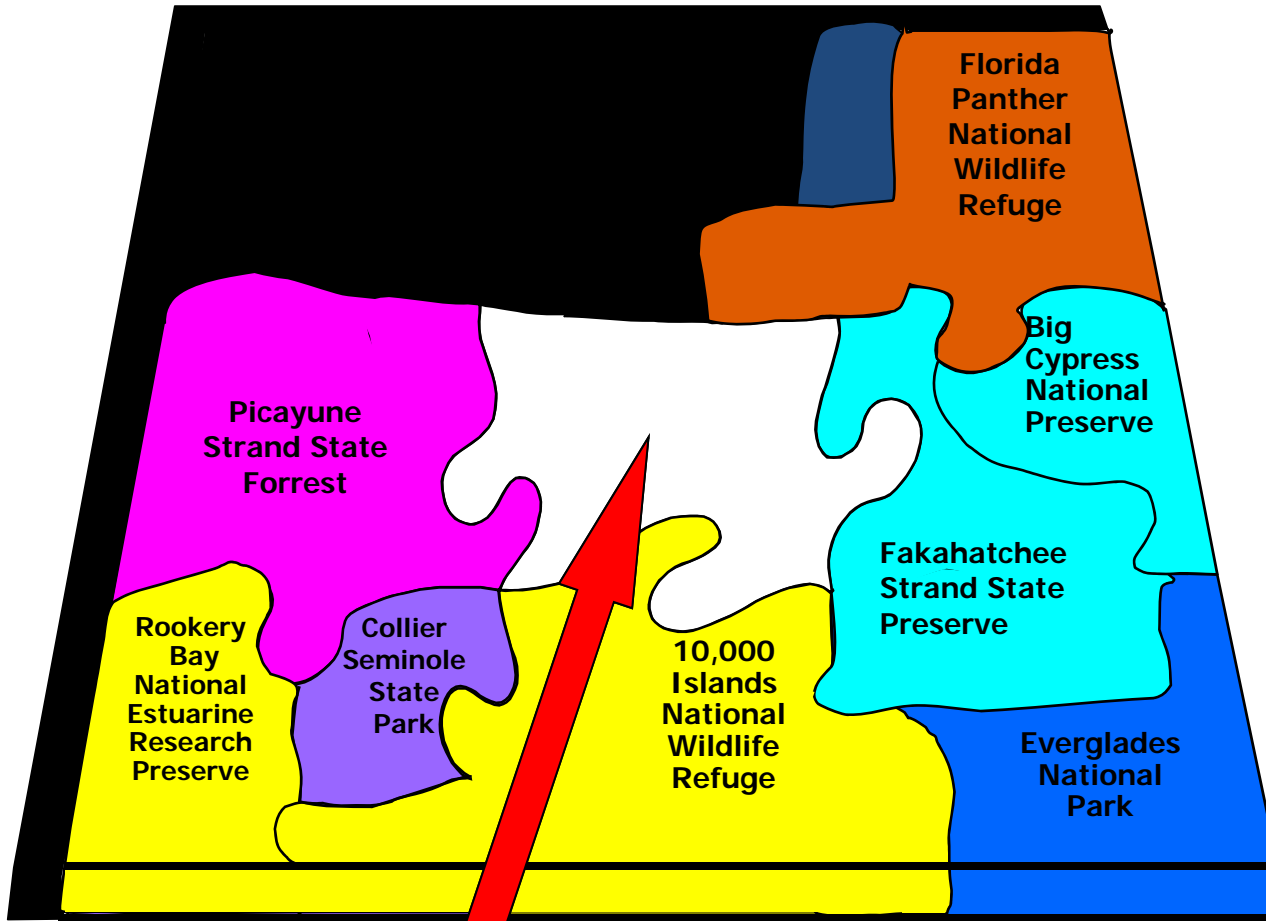
1997

2000

2005

Impacted Lands Picayune Strand Restoration Project







Prairie Canal Plugging



Merritt Pump
Station

Merritt Canal Plugging



Spreader Weirs at Merritt Pump Station



Faka Union Pump Station



Miller Pump Station



Road Removal



Manatee Mitigation Feature

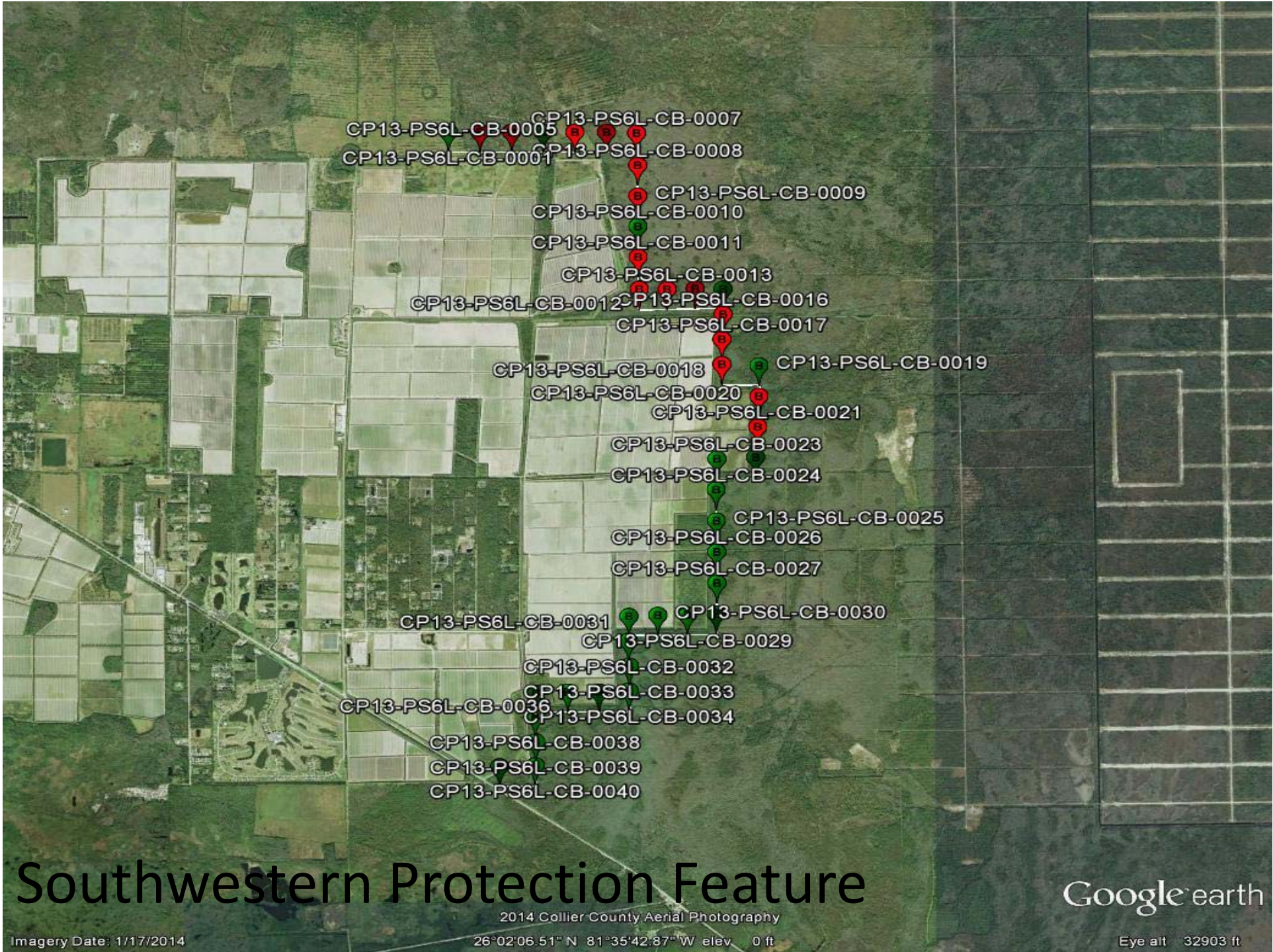


Gopher Tortoise Removal at the Manatee Mitigation Feature Site





Found in Burrow



CP13-PS6L-CB-0005
 CP13-PS6L-CB-0007
 CP13-PS6L-CB-0008
 CP13-PS6L-CB-0009
 CP13-PS6L-CB-0010
 CP13-PS6L-CB-0011
 CP13-PS6L-CB-0013
 CP13-PS6L-CB-0012
 CP13-PS6L-CB-0016
 CP13-PS6L-CB-0017
 CP13-PS6L-CB-0018
 CP13-PS6L-CB-0019
 CP13-PS6L-CB-0020
 CP13-PS6L-CB-0021
 CP13-PS6L-CB-0023
 CP13-PS6L-CB-0024
 CP13-PS6L-CB-0025
 CP13-PS6L-CB-0026
 CP13-PS6L-CB-0027
 CP13-PS6L-CB-0030
 CP13-PS6L-CB-0031
 CP13-PS6L-CB-0029
 CP13-PS6L-CB-0032
 CP13-PS6L-CB-0033
 CP13-PS6L-CB-0033
 CP13-PS6L-CB-0036
 CP13-PS6L-CB-0034
 CP13-PS6L-CB-0038
 CP13-PS6L-CB-0039
 CP13-PS6L-CB-0040

Southwestern Protection Feature

Google earth

2014 Collier County Aerial Photography

Imagery Date: 1/17/2014

26°02'06.51" N 81°35'42.87" W elev. 0 ft

Eye alt 32903 ft

Recent Controlled Burn in Southern End of Project Area













